

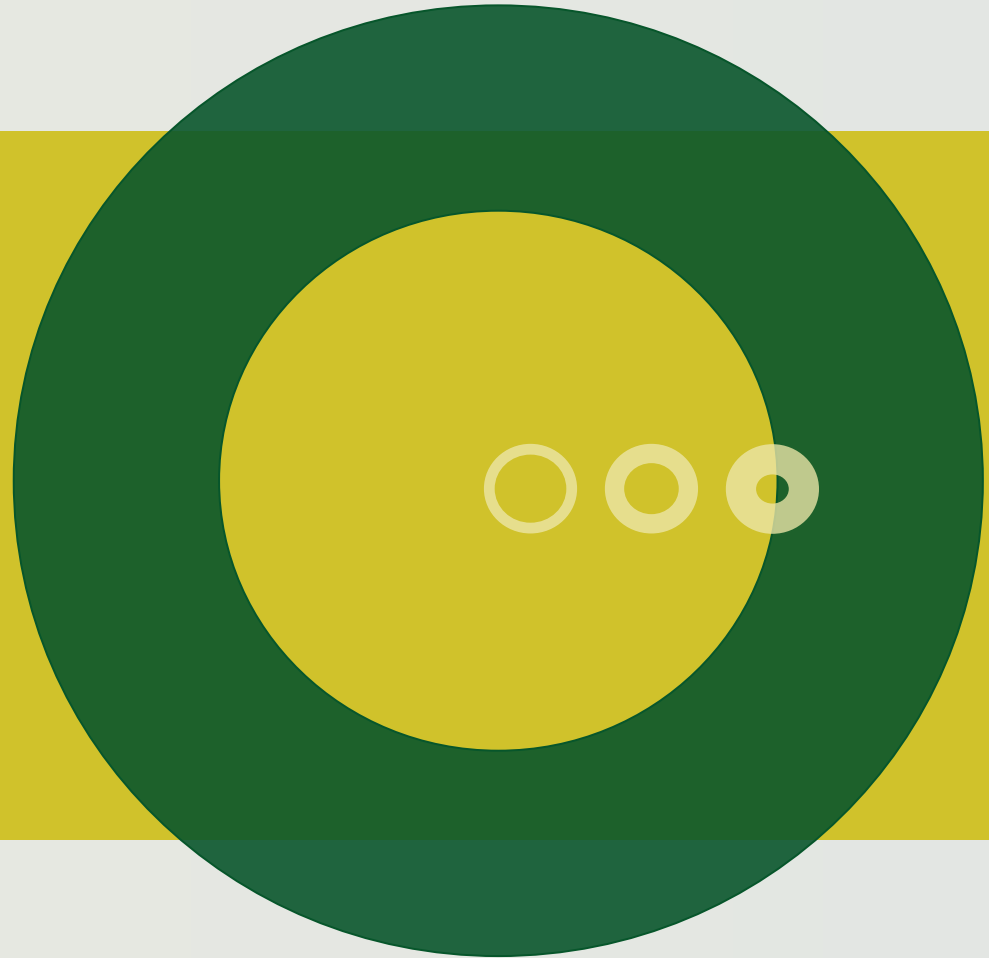


KNOWLEDGE CENTRE FOR AGRICULTURE

This project has been subsidised by the European Union's Agricultural Fund for Rural Development and the Danish Ministry of Food, Agriculture and Fisheries.

Planning of the open land

*by Kræn Ole Birkkjær
Senior Adviser*



Financing

Production

Building work

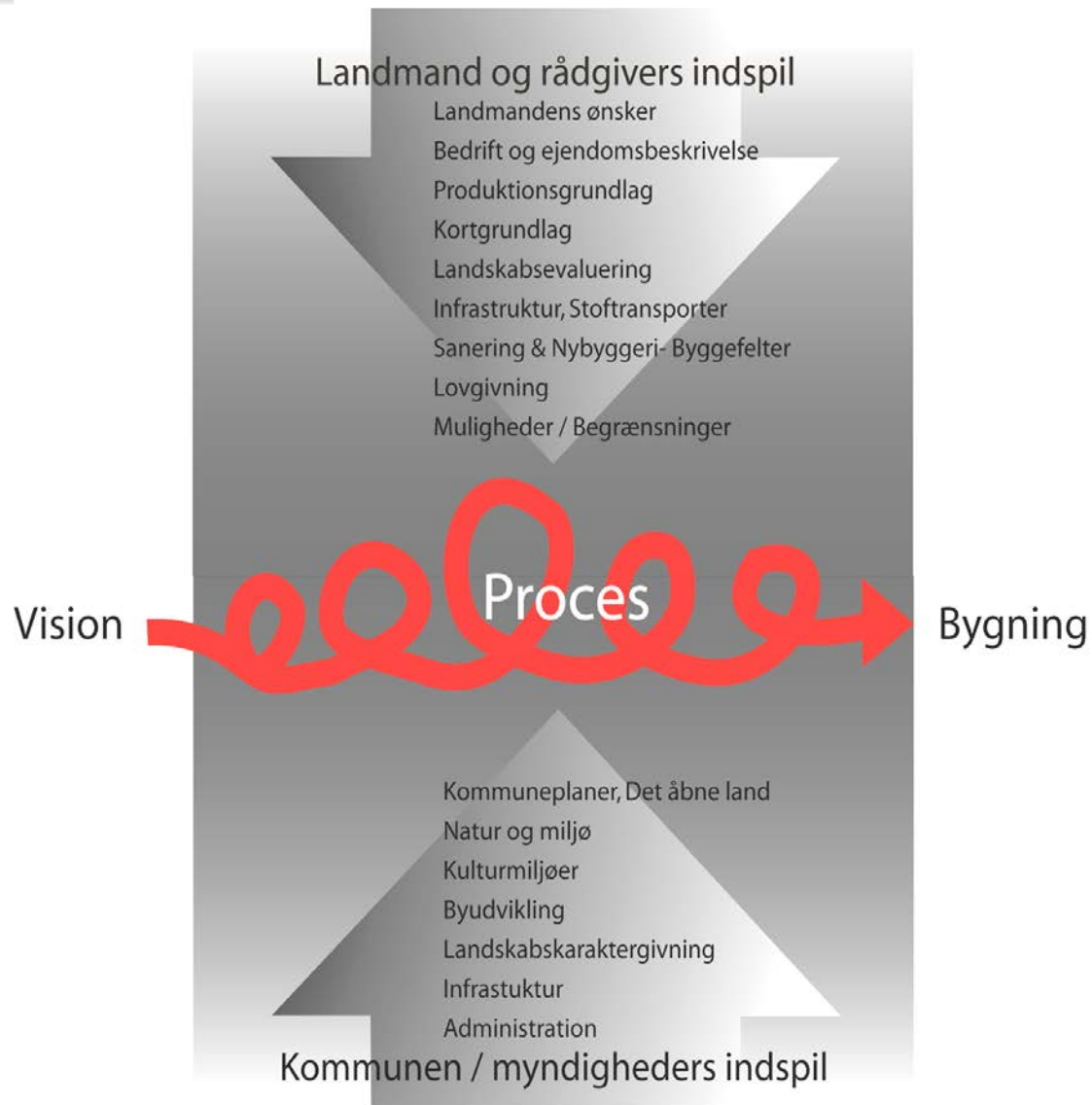
Environment

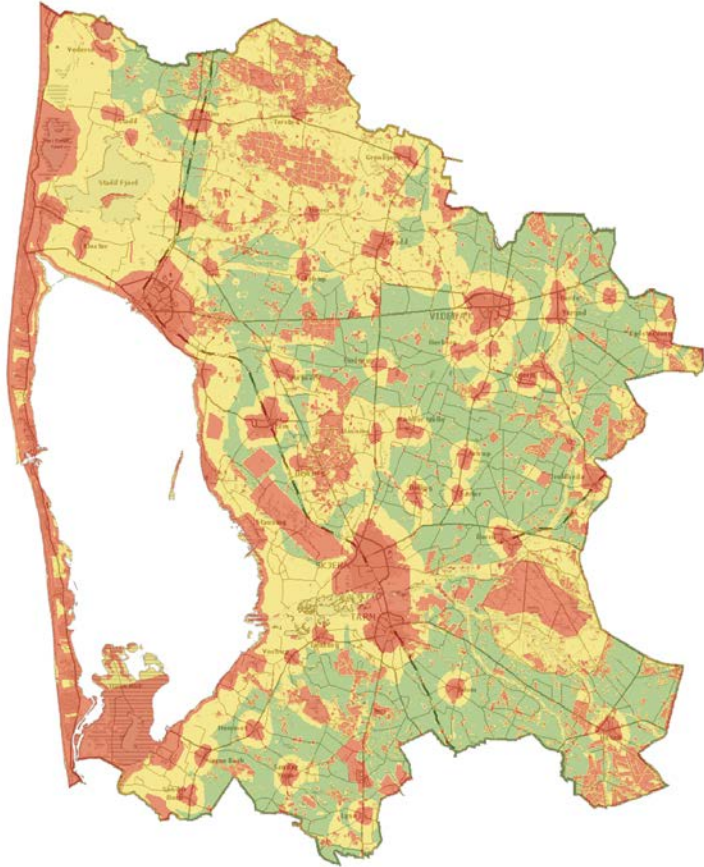
Landscape

Nature



- Investment security
 - Association with infrastructure
 - Least environmental bonds
 - Possibility of future growth
 - Potential synergies
- Foundation for production
 - Solid areas
 - Soil conditions
 - Cultivation technology





Local authority plans

- Long-term strategy and prioritizations of the local authority
- Zones and land allocation
- Guidelines for localisation and layout
- Infrastructure

Localisation

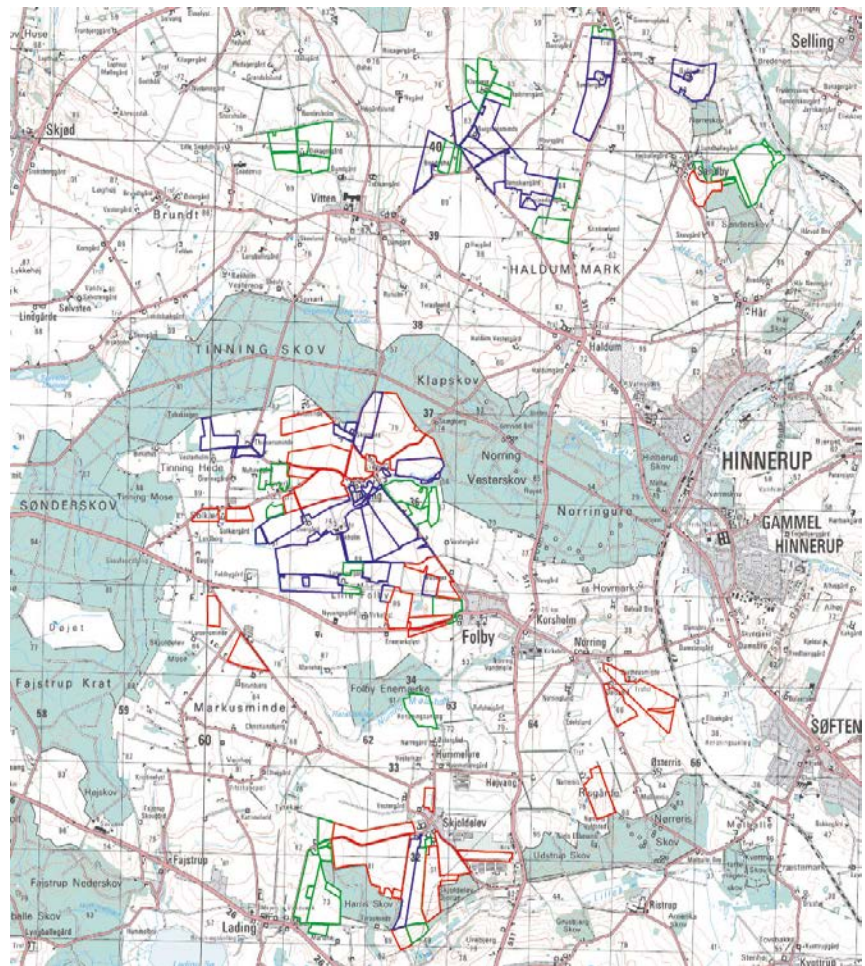
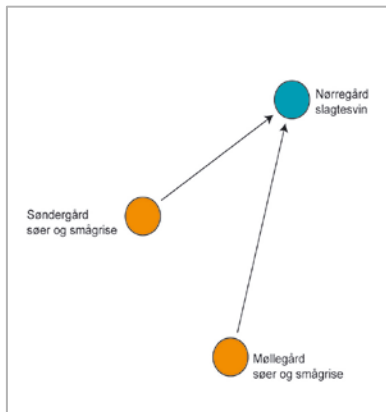
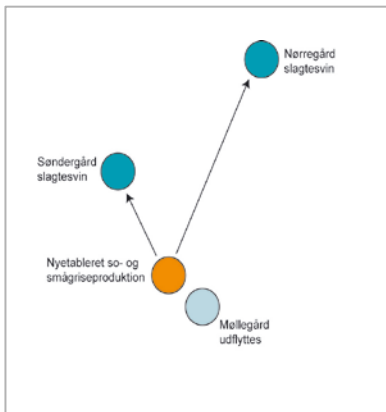


Siting



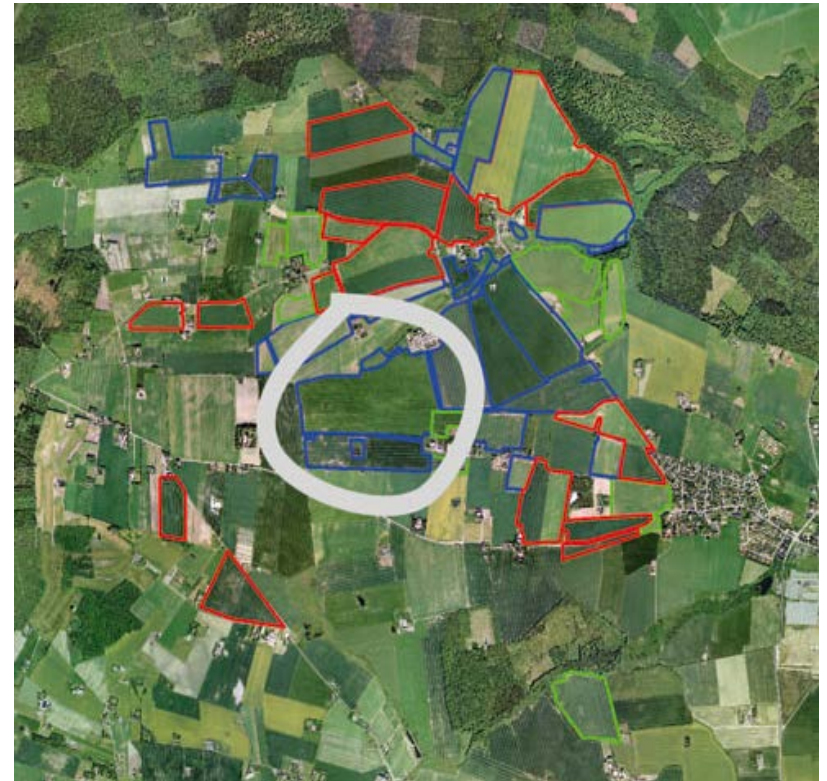
Localisation

- Buildings
- Agricultural properties
- Production - disposition
- Perspective

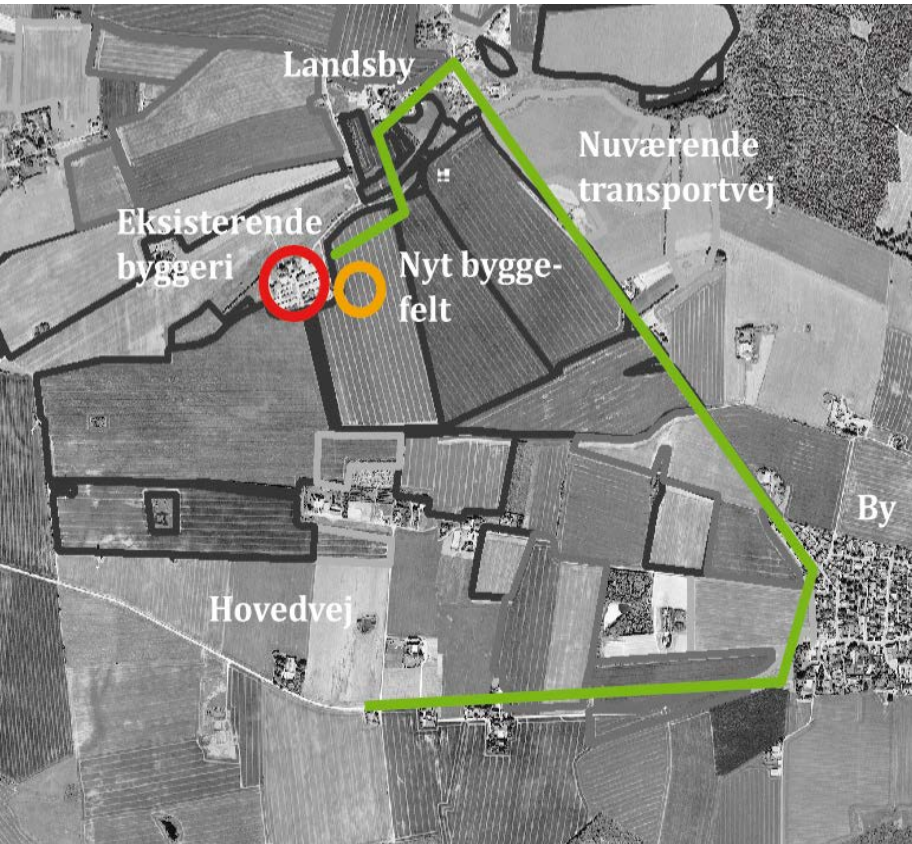


Siting

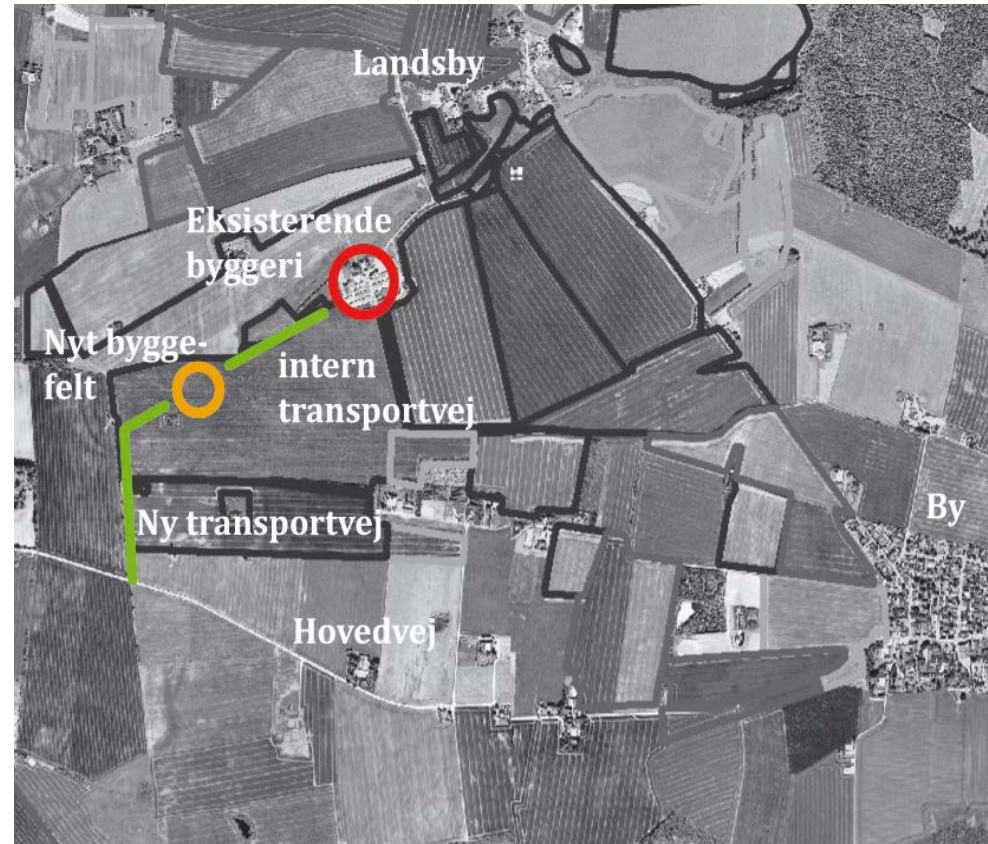
- Overall structure
- Infrastructure
- Environmental conditions
- Landscape
- Terrain
- Logistics and production
- Plants and buildings



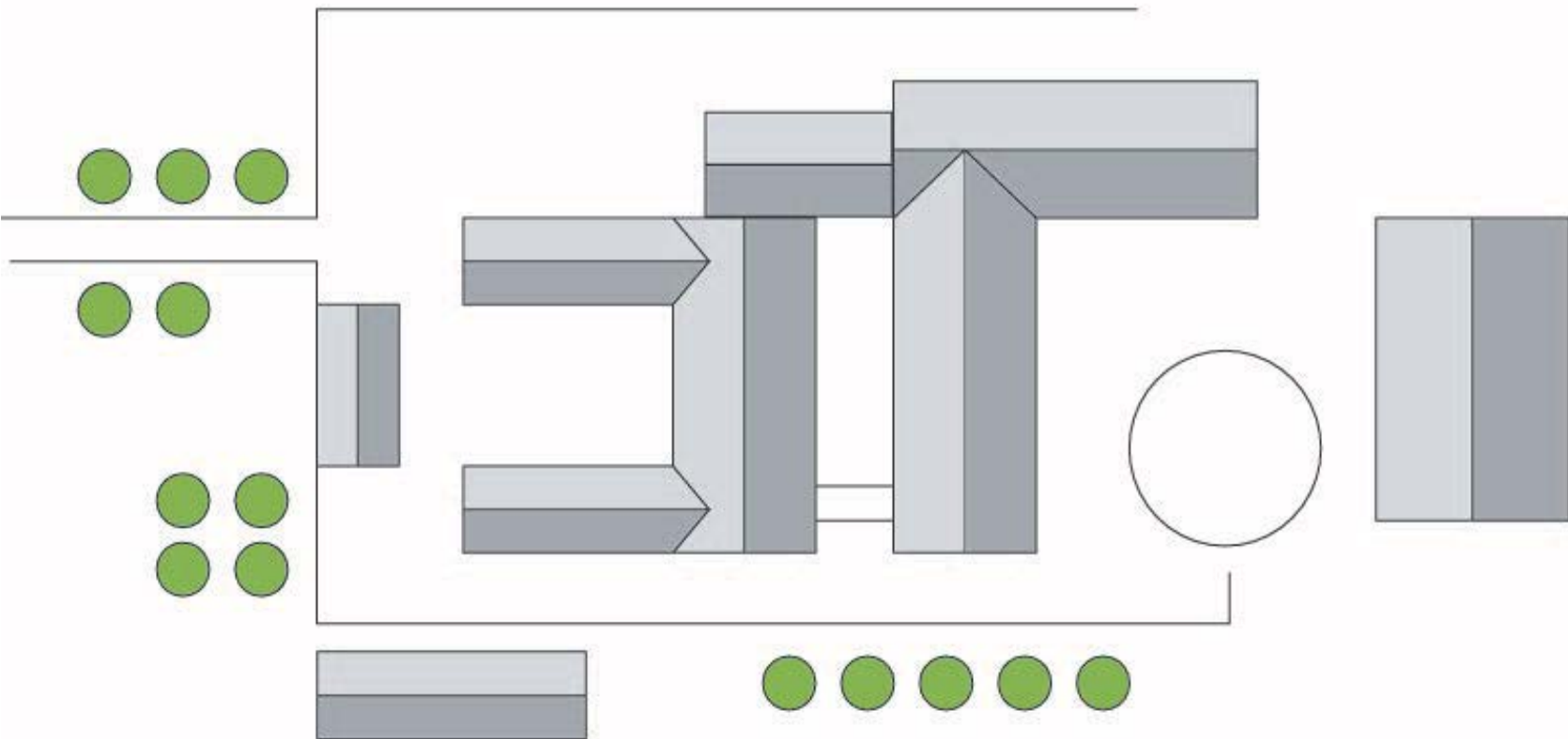
Infrastructure

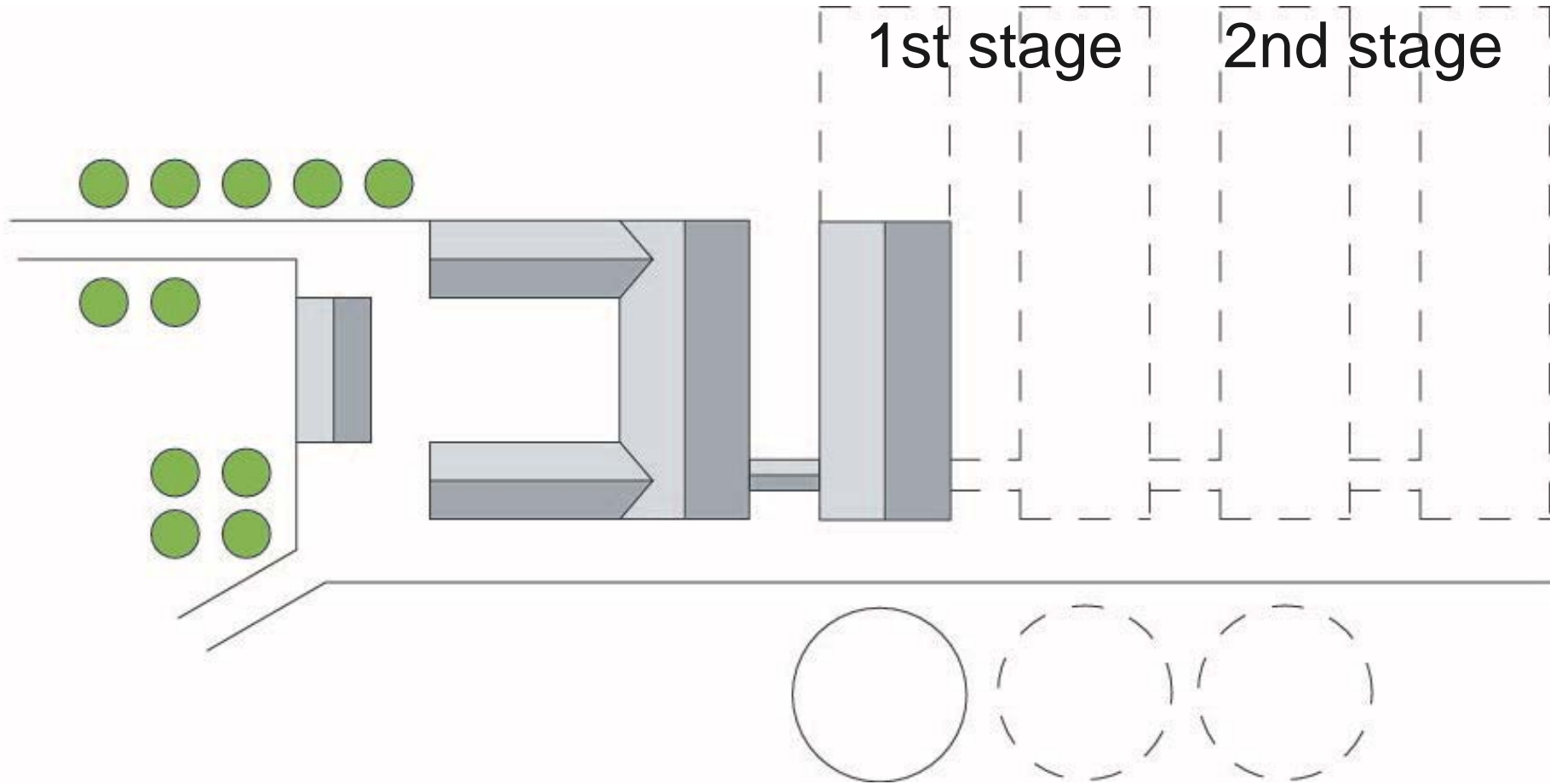


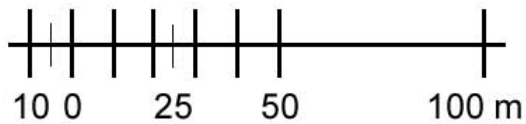
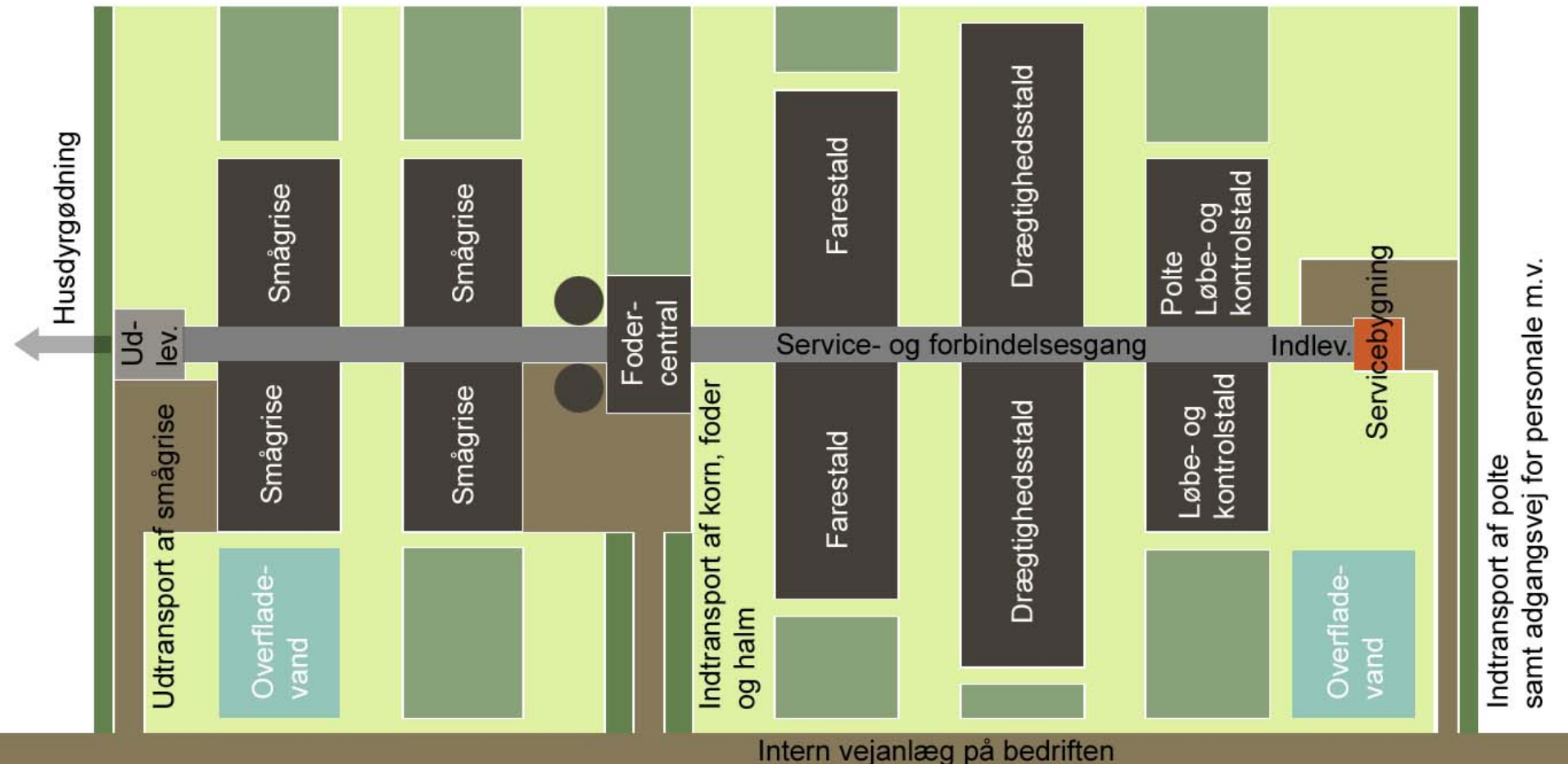
Before



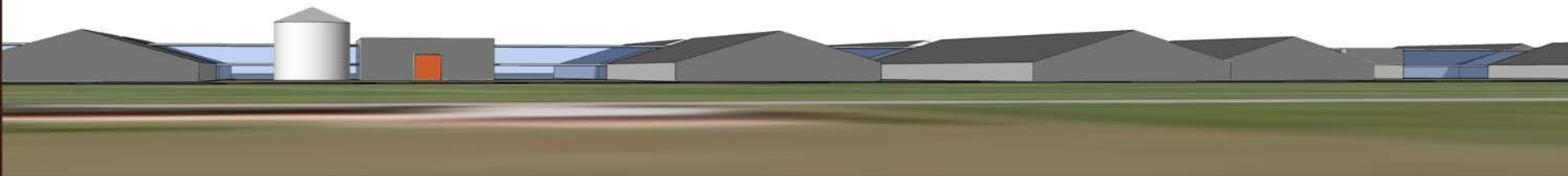
After







Staldanlæg til 3.000 årssøer, med produktion af smågrise op til 30 kg, i alt ca. 95.000 stk..
 Karantænerum til polte findes på anden lokalitet, inden ankomsten til dette soanlæg.
 Slagtesvinene produceres i staldanlæg på anden lokalitet.

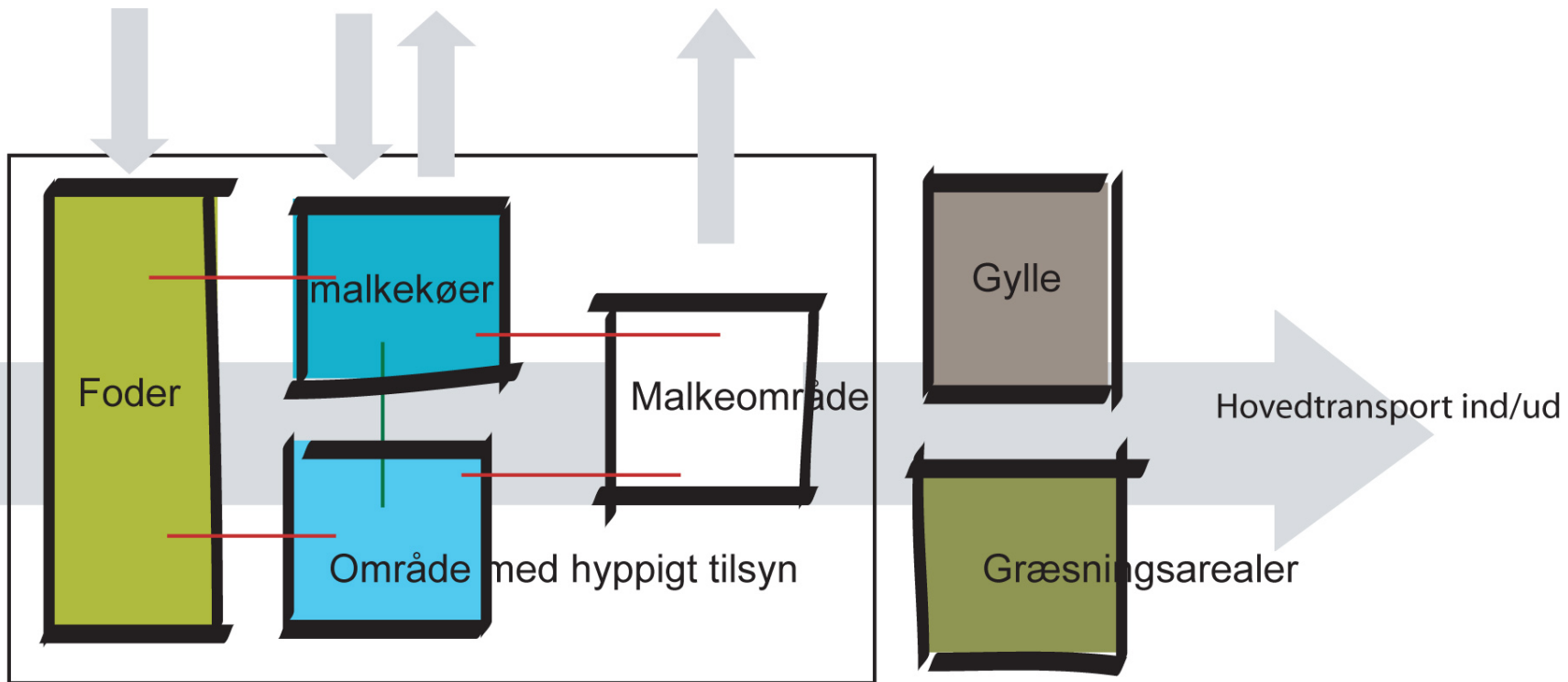






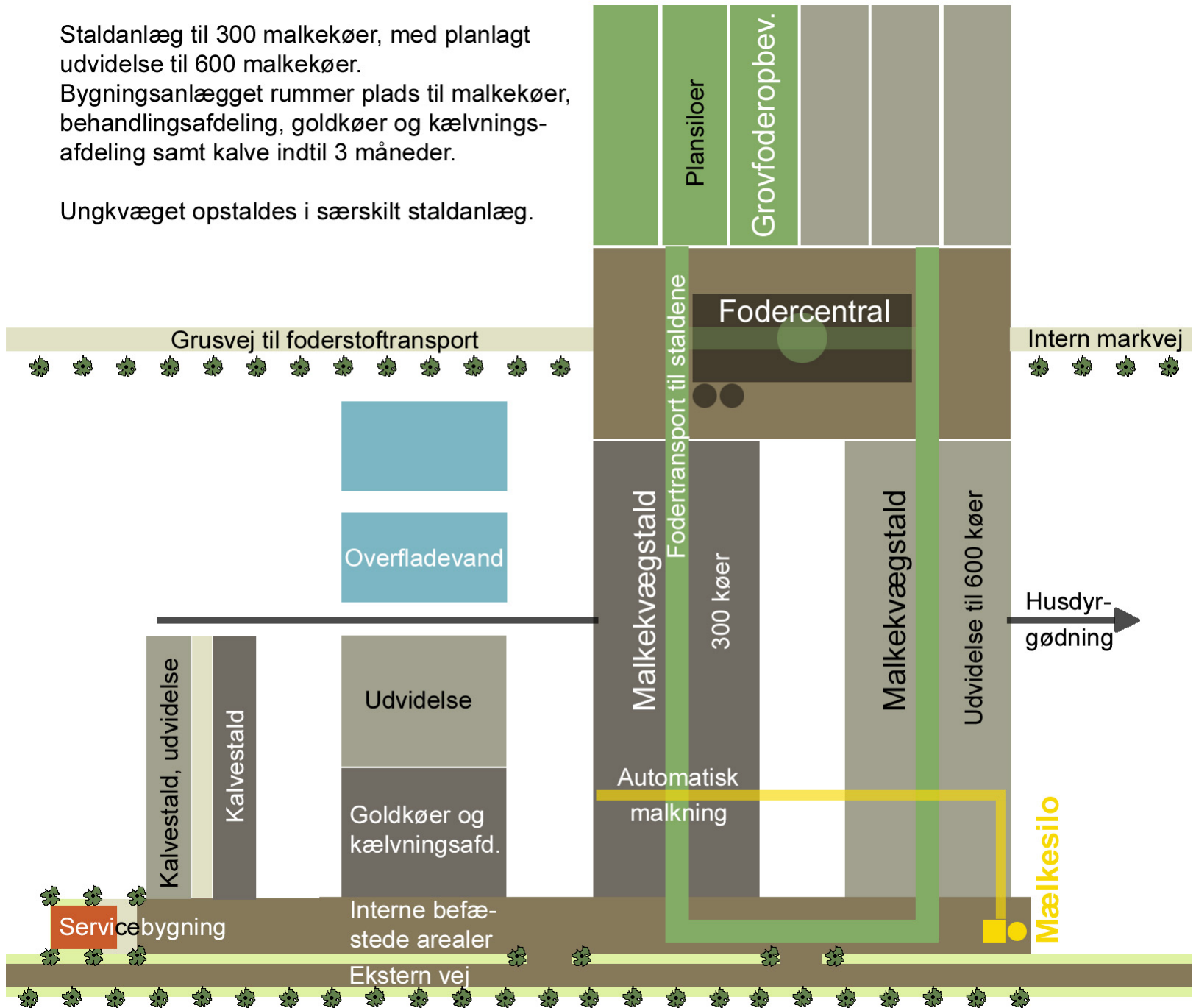
KNOWLEDGE CENTRE FOR AGRICULTURE

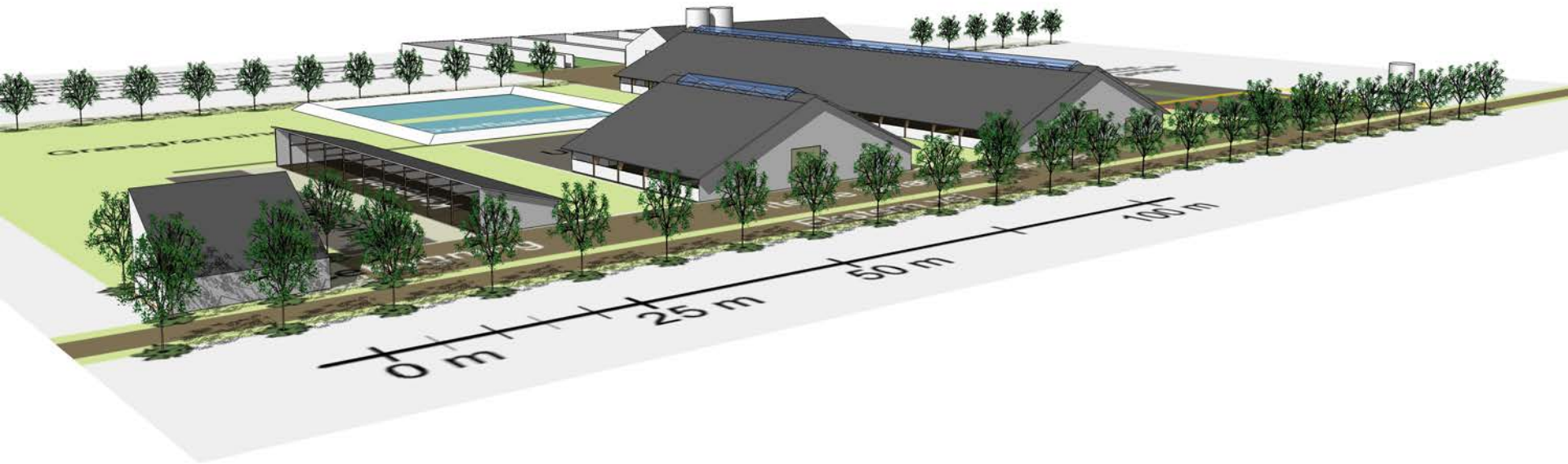


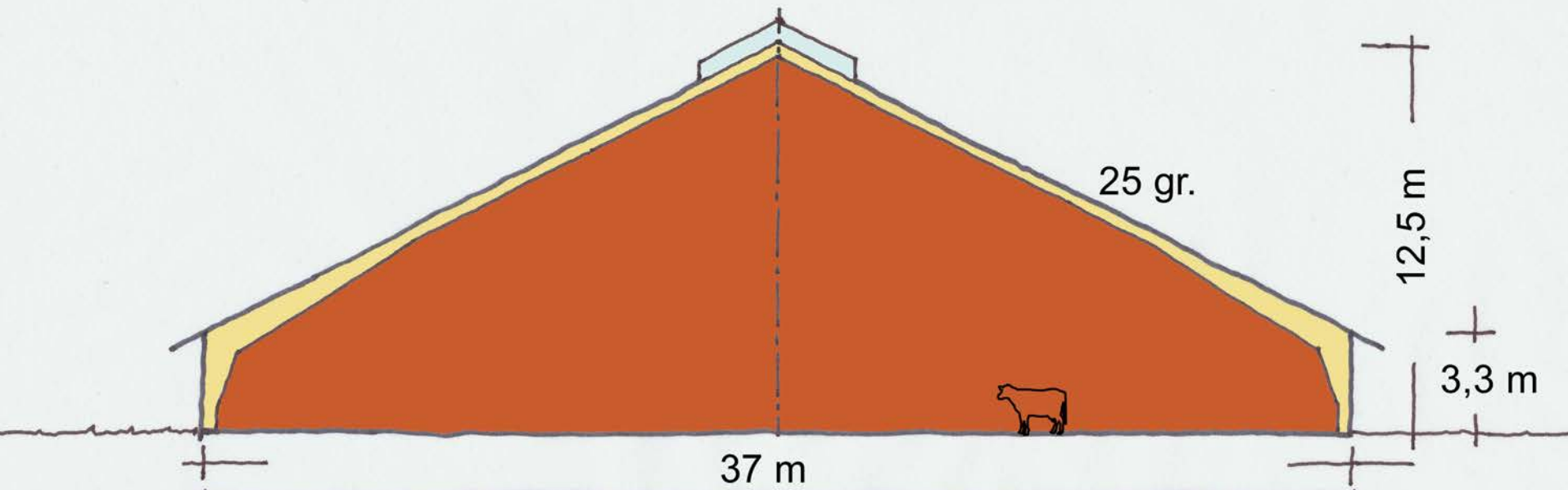


Staldanlæg til 300 malkekøer, med planlagt udvidelse til 600 malkekøer.
Bygningsanlægget rummer plads til malkekøer, behandlingsafdeling, goldkøer og kælvningsafdeling samt kalve indtil 3 måneder.

Ungkvæget opstaldes i særskilt staldanlæg.







37 m

25 gr.

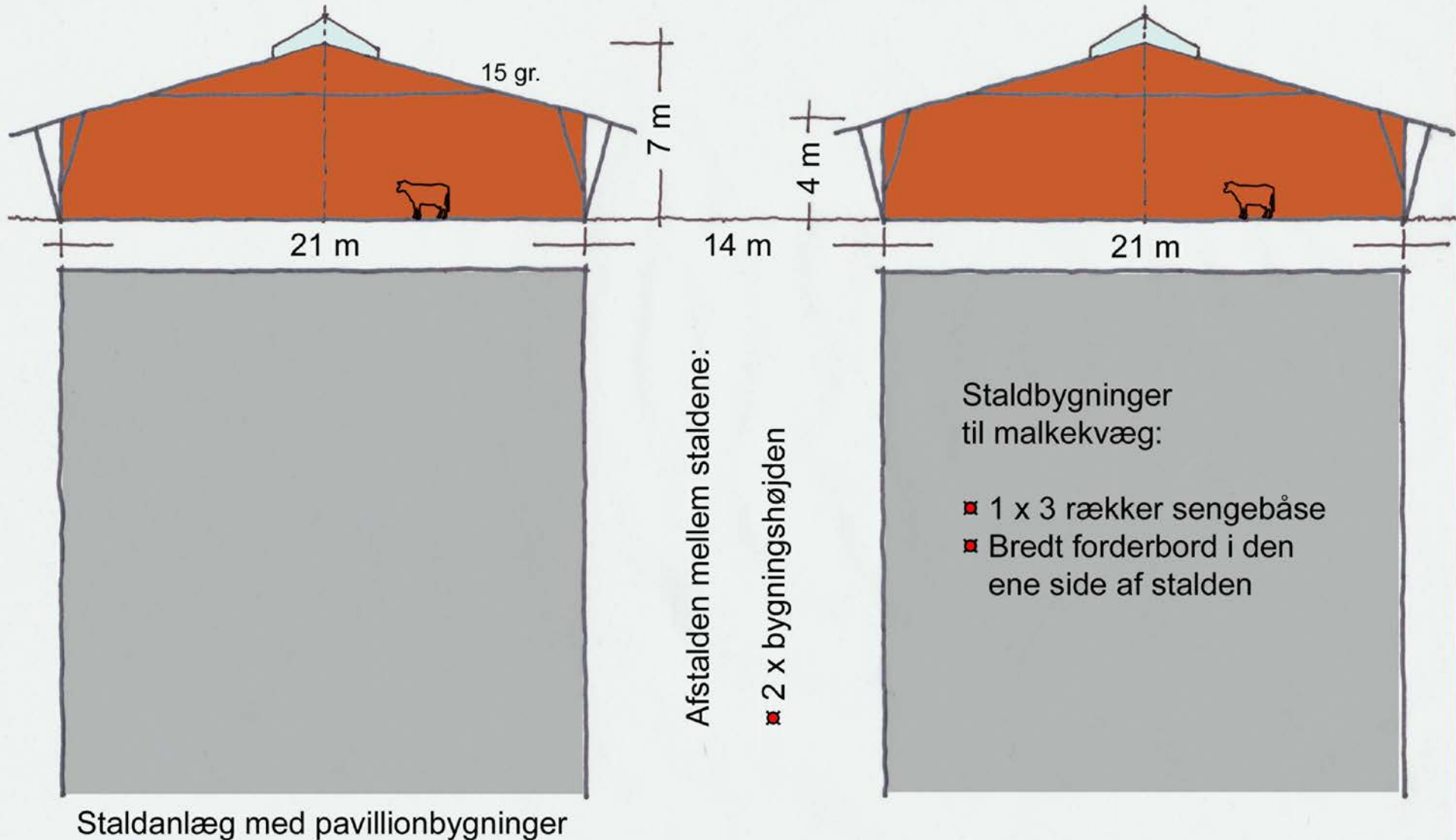
12,5 m

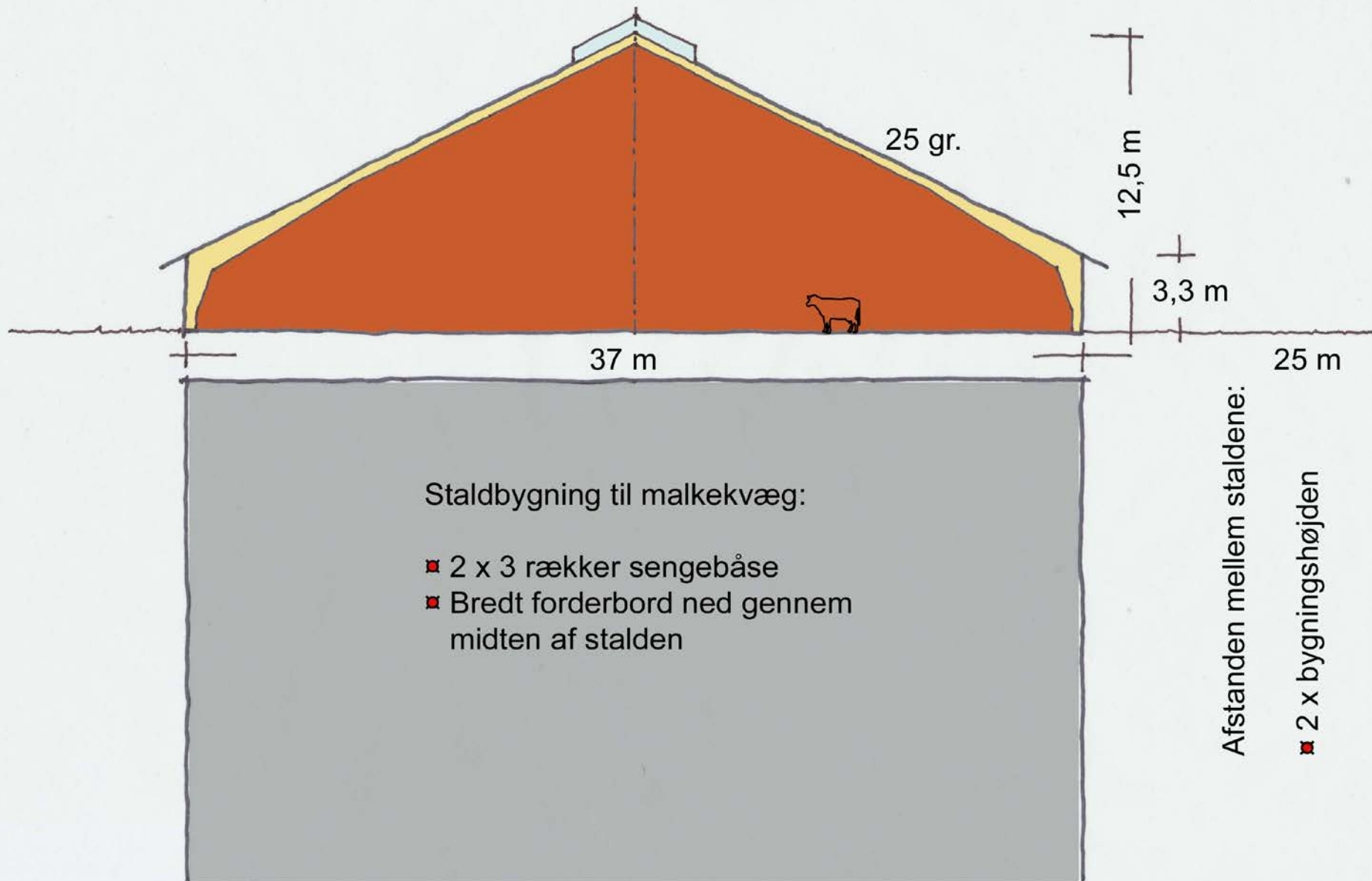
3,3 m

Staldbygning til malkekvæg:

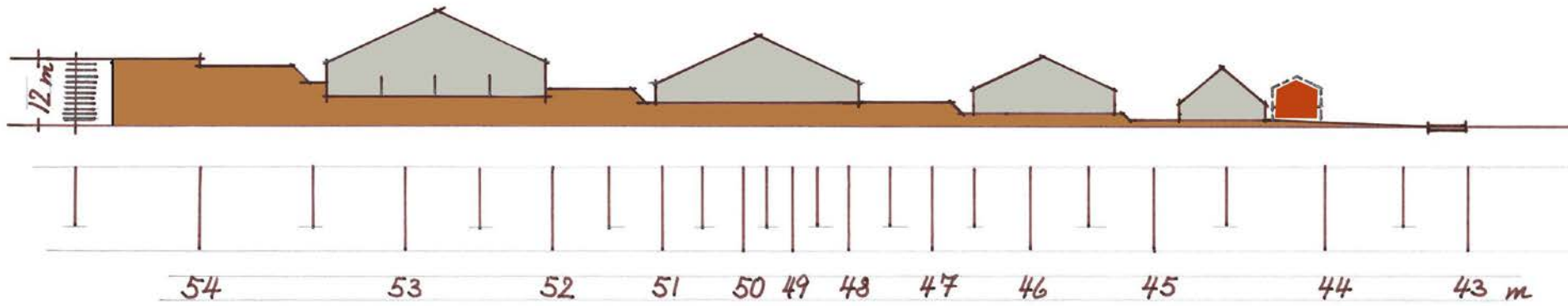
- 2 x 3 rækker sengebåse
- Bredt forderbord ned gennem midten af stalden

Afstanden mellem staldene:

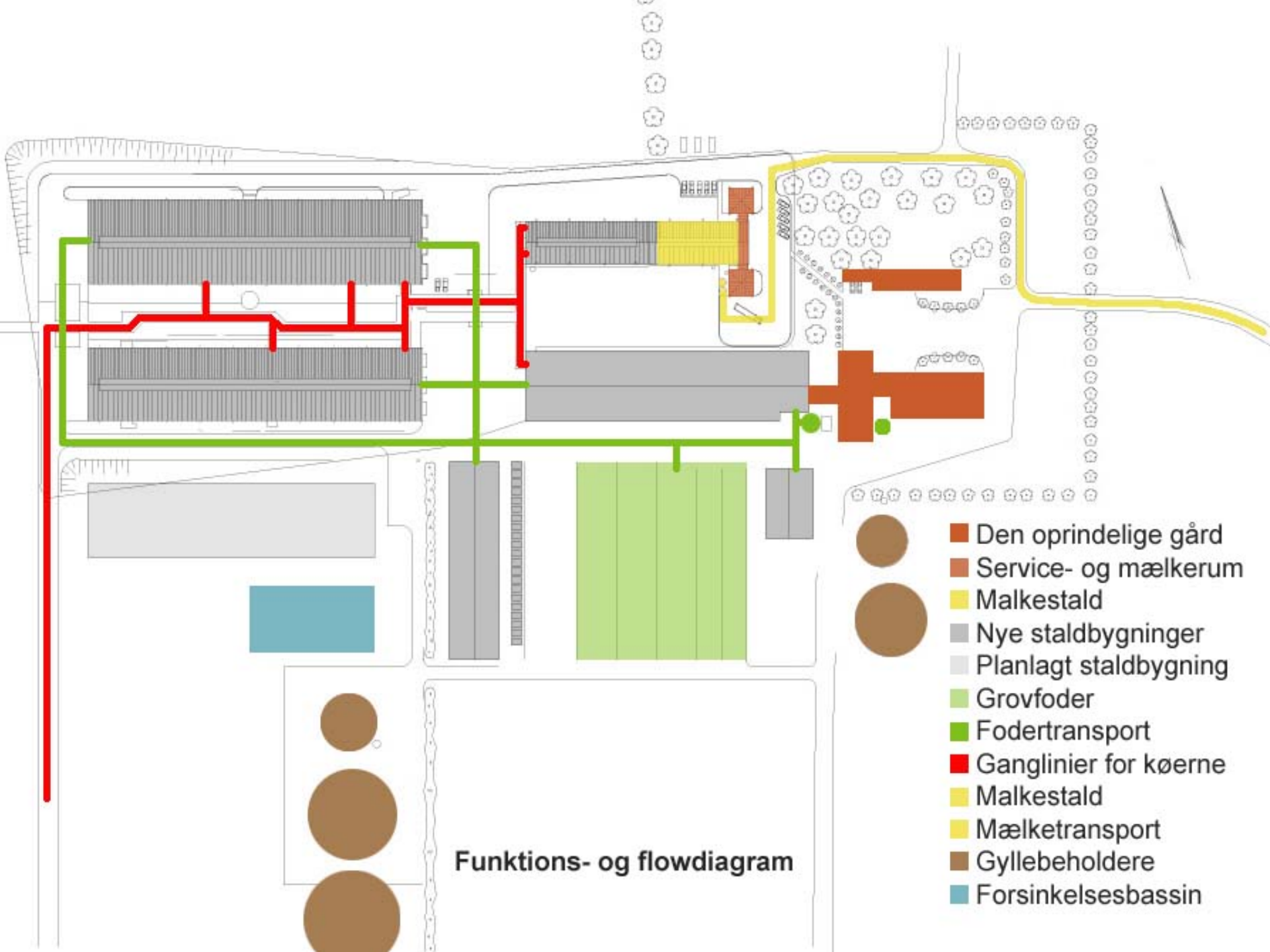




Staldanlæg med kompakte bygninger







Funktions- og flowdiagram

-  Den oprindelige gård
-  Service- og mælkerum
-  Malkestald
-  Nye staldbygninger
-  Planlagt staldbygning
-  Grovfoder
-  Fodertransport
-  Ganglinier for køerne
-  Malkestald
-  Mælketransport
-  Gyllebeholdere
-  Forsinkelsesbassin





Thank you for your attention